

HEOLDDU SOLAR FARM

Environmental Statement

Volume 3, Appendix 9.2: Statistical Analysis

**September
2025**

Document Status					
Version	Purpose	Authored	Reviewed	Approved	Date
01	Draft	RPS	Heolddu Solar Park Ltd	RPS	Sept 2025

Approval for issue	
RPS	September 2025

© Copyright RPS Consulting Services Ltd. All rights reserved.

The report has been prepared for the exclusive use of our client and unless otherwise agreed in writing by RPS Group Plc, any of its subsidiaries, or a related entity (collectively 'RPS'), no other party may use, make use of, or rely on the contents of this report. The report has been compiled using the resources agreed with the client and in accordance with the scope of work agreed with the client. No liability is accepted by RPS for any use of this report, other than the purpose for which it was prepared. The report does not account for any changes relating to the subject matter of the report, or any legislative or regulatory changes that have occurred since the report was produced and that may affect the report. RPS does not accept any responsibility or liability for loss whatsoever to any third party caused by, related to or arising out of any use or reliance on the report. RPS accepts no responsibility for any documents or information supplied to RPS by others and no legal liability arising from the use by others of opinions or data contained in this report. It is expressly stated that no independent verification of any documents or information supplied by others has been made. RPS has used reasonable skill, care and diligence in compiling this report and no warranty is provided as to the report's accuracy. No part of this report may be copied or reproduced, by any means, without the prior written consent of RPS.

Prepared by:

RPS

Prepared for:

Heolddu Solar Park Ltd

Contents

1	INTRODUCTION.....	1
---	-------------------	---

Figures

Figure 1. MP1 Daytime Statistical Analysis

Figure 2. MP1 Early Morning Statistical Analysis

Figure 3. MP2 Daytime Statistical Analysis

Figure 4. MP2 Early Morning Statistical Analysis

Figure 5. MP3 Daytime Statistical Analysis

Figure 6. MP3 Early Morning Statistical Analysis

1 INTRODUCTION

1.1 General

- 1.1.1 This document forms Volume 3, Appendix 9.2: Statistical Analysis, of the Environmental Statement (ES) prepared for the development of Heolddu Solar Farm (referred to hereafter as 'the Proposed Development'). This appendix supplements Volume 1, Chapter 9: Noise and Vibration.
- 1.1.2 Figure 1 to Figure 6 below show the daytime and early morning statistical analysis for Monitoring Position MP1, MP2 and MP3.

Figure 1. MP1 Daytime Statistical Analysis

MP1 - Statistical Analysis of Daytime Period (07:00-23:00) LA90,1hour Background Sound

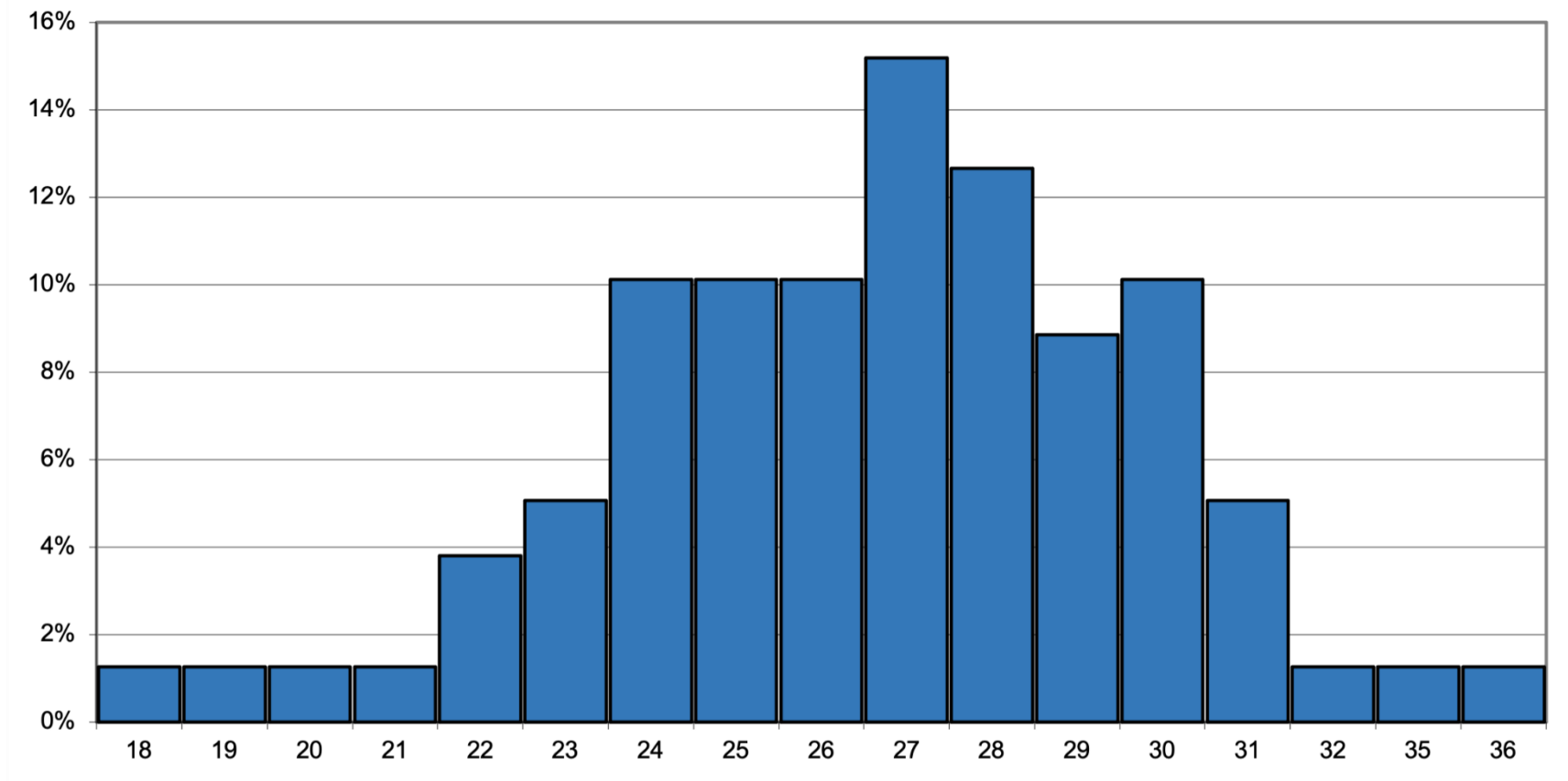


Figure 2. MP1 Early Morning Statistical Analysis

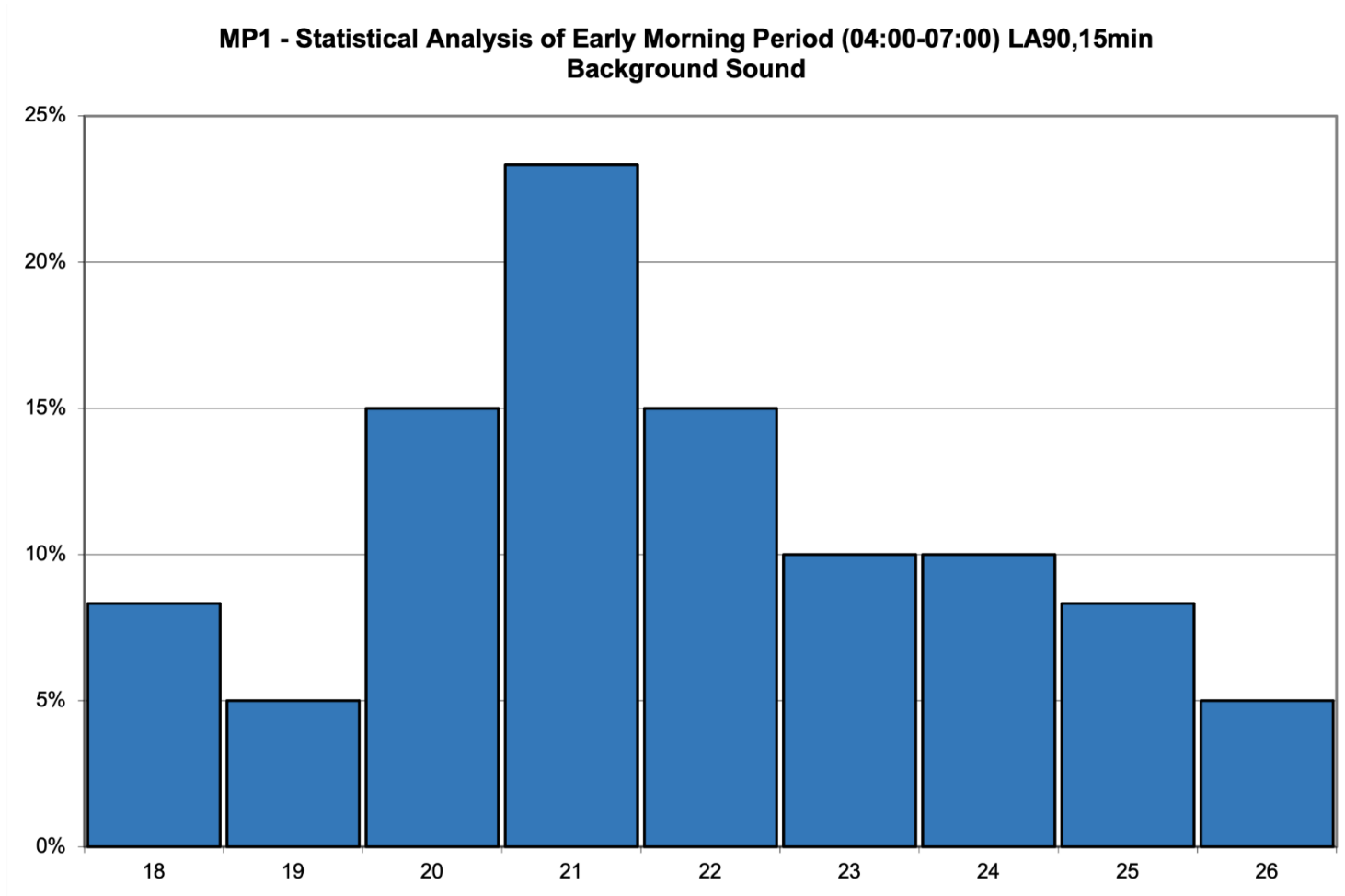


Figure 3. MP2 Daytime Statistical Analysis

MP2 - Statistical Analysis of Daytime Period (07:00-23:00) LA90,1hour Background Sound

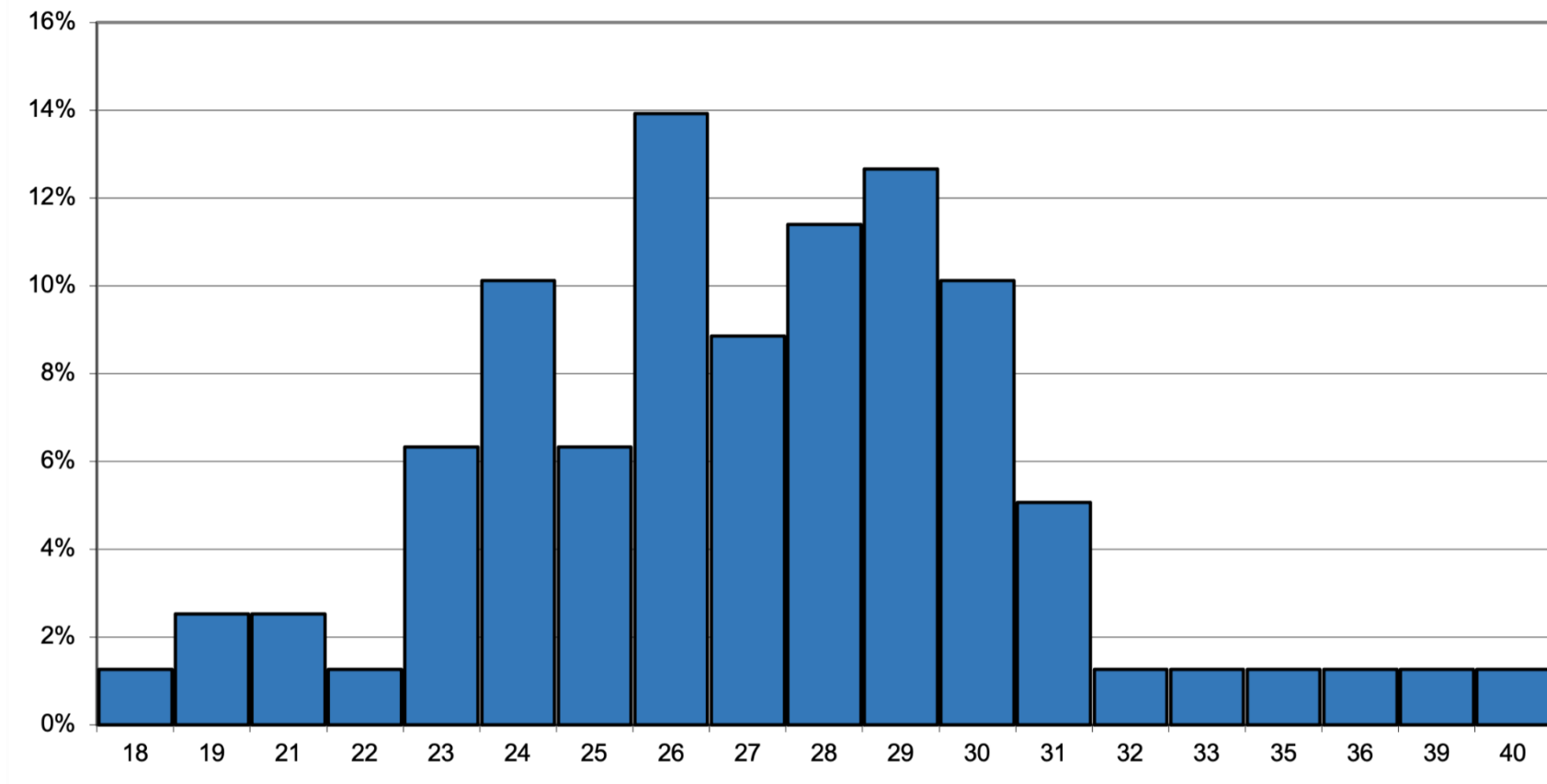


Figure 4. MP2 Early Morning Statistical Analysis

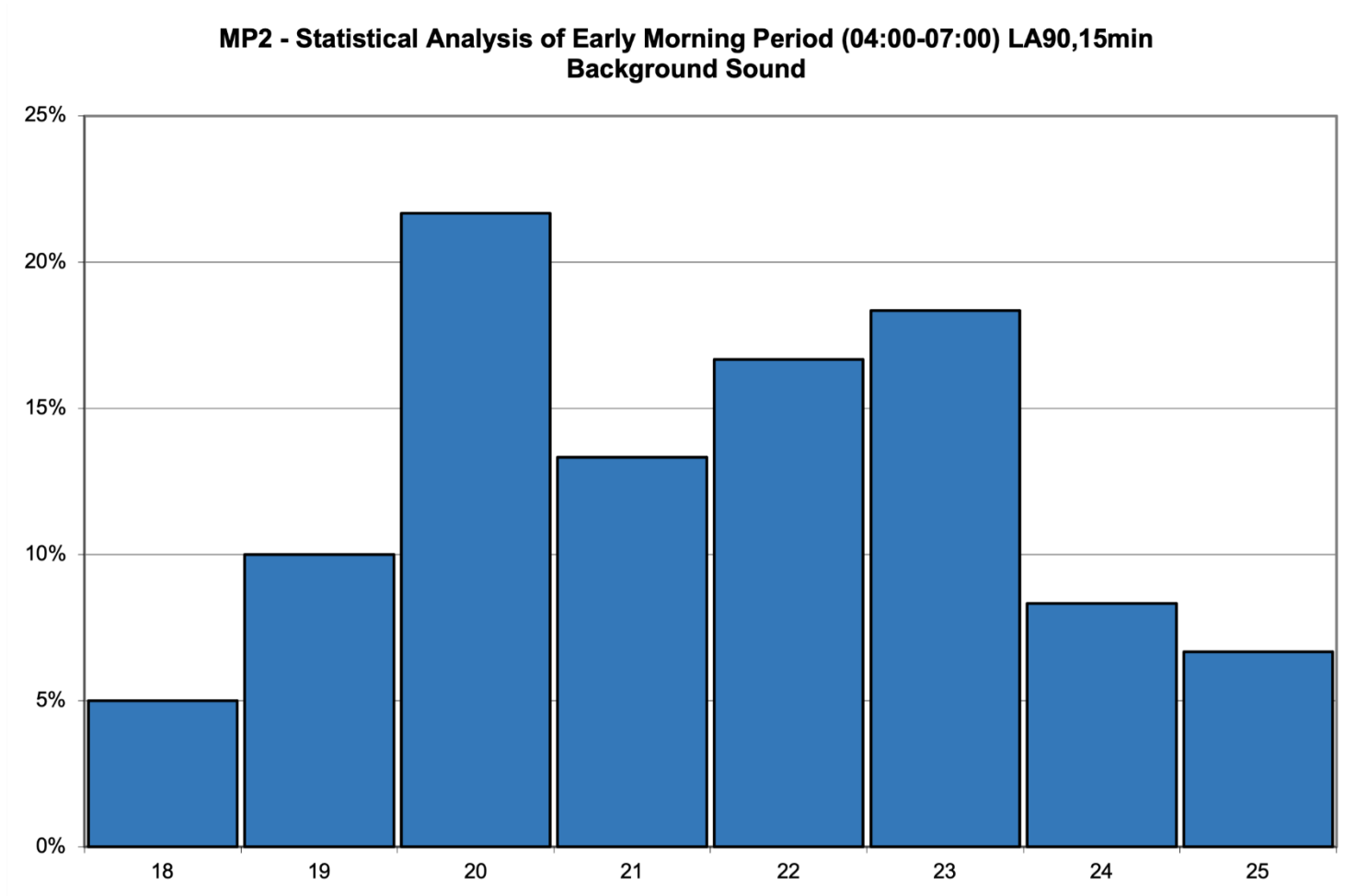


Figure 5. MP3 Daytime Statistical Analysis

MP3 - Statistical Analysis of Daytime Period (07:00-23:00) LA90,1hour Background Sound

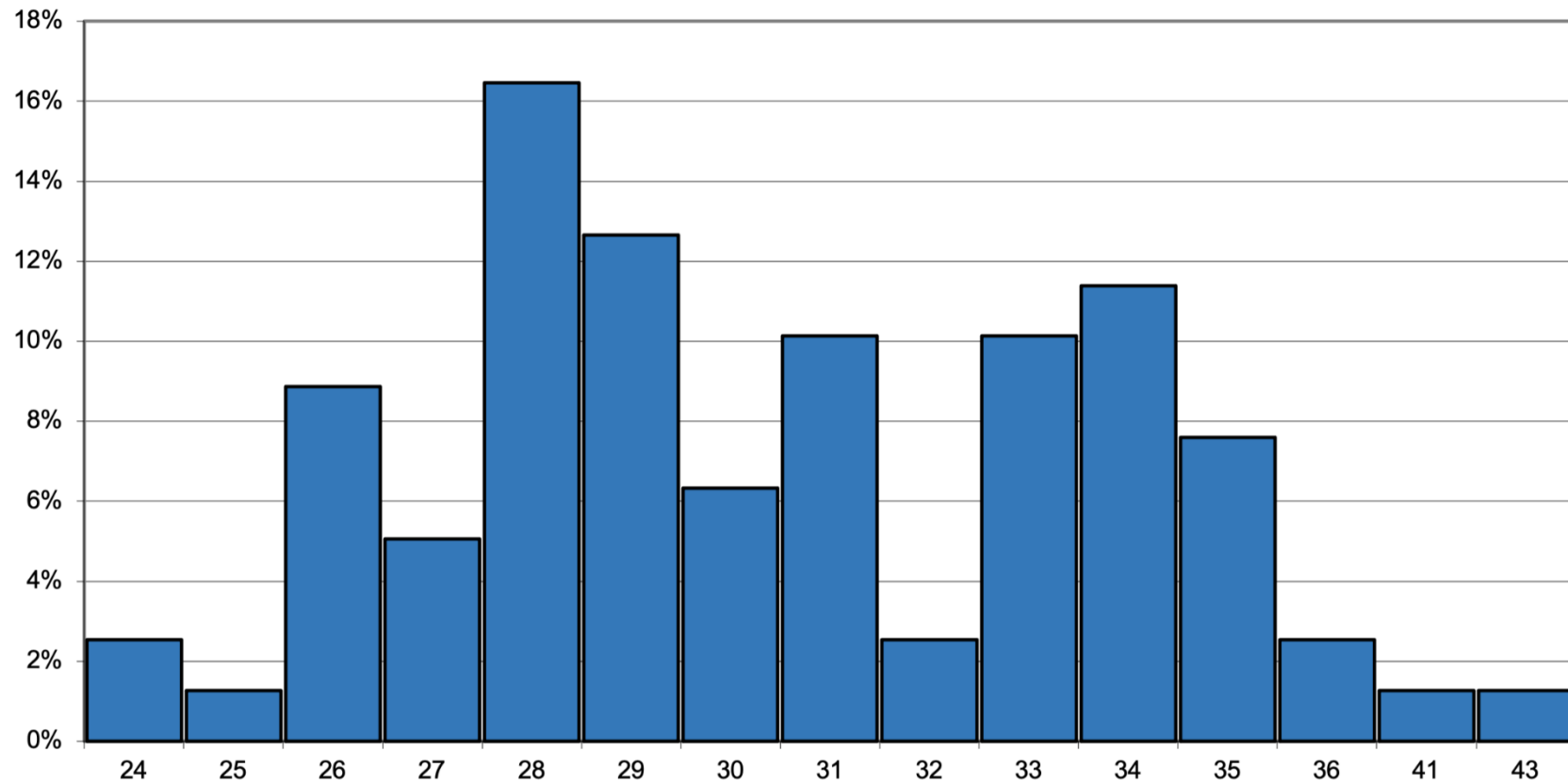


Figure 6. MP3 Early Morning Statistical Analysis

**MP3 - Statistical Analysis of Early Morning Period (04:00-07:00) LA90,15min
Background Sound**

