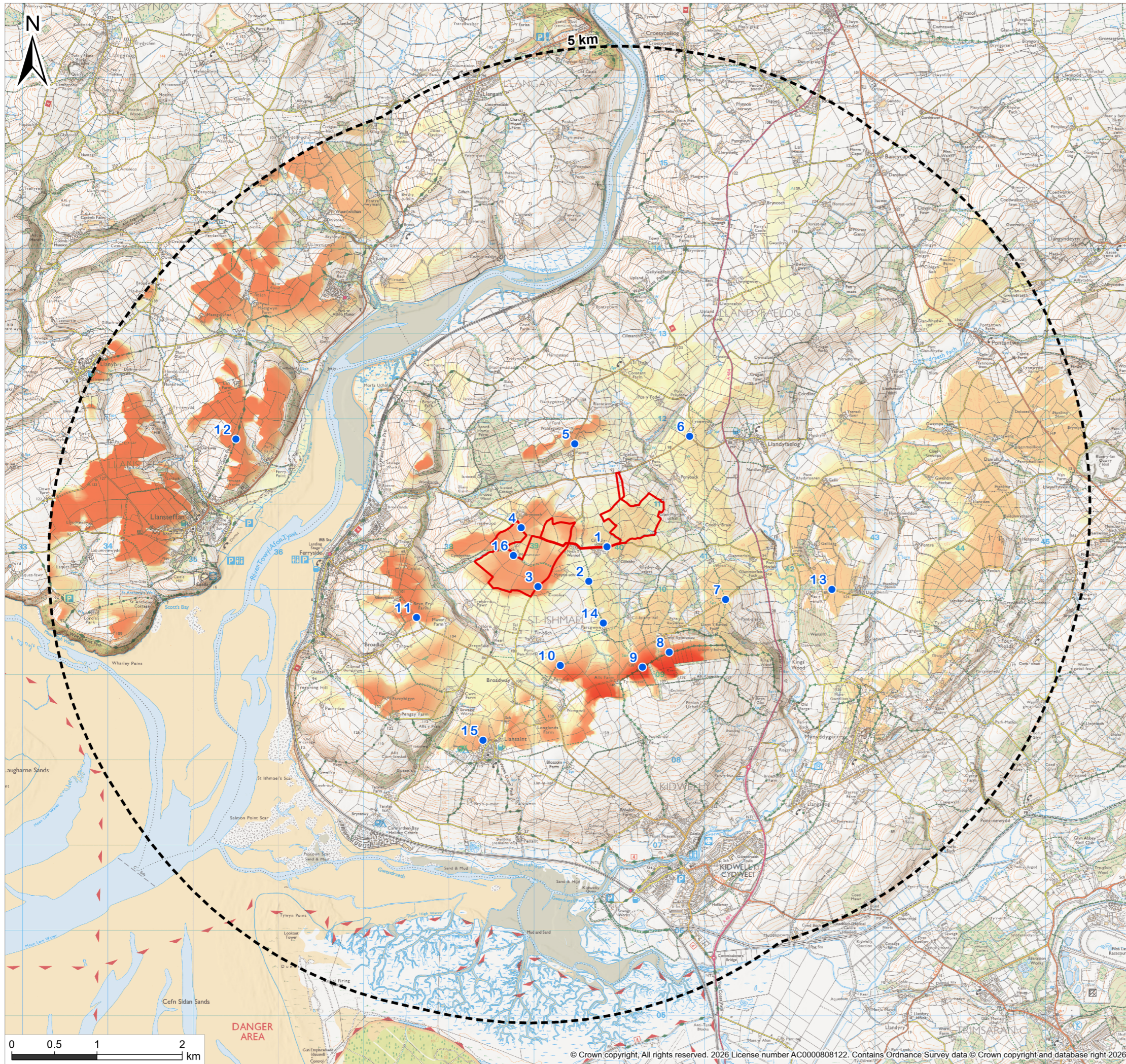


Environmental Statement, Volume 2, Figure
5.2: Zone of Theoretical Visibility incl.

Representative Viewpoints
Heolddu solar farm

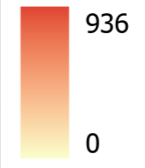
On behalf of Qualitas Energy



Legend

- Site
- Study area
- Representative viewpoints

Zone of Theoretical Visibility



Data source	OS Terrain 5
Date sourced	2024
Coverage	Within 5km of the Application Boundary
Original cell size	5 m

ZTV calculated using following heights

- Solar panels: 3 m
- Inverters: 2.2 m
- DNO substation: 3.3 m
- Transformer: 2.5 m
- Communications tower: 15.2 m
- Spares container: 2.5 m

Ground cover is modelled using indicative heights of 9m for buildings, and 12m for woodland blocks. Ground cover is located using OS Open Maps.

ZTV is not calculated beyond 5 km of Application Boundary
Viewer height is 1.7 m

The effects of earth curvature and light refraction are considered.
ZTV calculation does not use mathematically approximate methods.



© 2026 RPS Group
1. This drawing has been prepared in accordance with the scope of RPS's appointment with its client and is subject to the terms and conditions of that appointment. RPS accepts no liability for any use of this document other than by its client and only for the purposes for which it was prepared and provided.
2. If received electronically it is the recipients responsibility to print to correct scale. Only written dimensions should be used.

Project Name	Heolddu Solar Farm			
Drawing Title	Zone of Theoretical Visibility: Panels, Communications Tower, Inverters, Transformers, DNO Substation, and Spare Parts Container			

Figure Number	5.2			
Drawing Number	NDIP00319-0013-05			

05	16/03/2026	FINAL	AC	AI
Rev	Date	Status	By	CB

Scale @ A3	Plot Size	Datum
1:45,000	294 x 277 mm	OSGB 1936

\\CARD-PH-02\Env\Planning\Projects\Current projects\794-PLN-NDIP-00319-Heolddu Solar\TechDrawings\NDIP00319-0013-05.aprx - NDIP00319-0013-05